

WEEKLY UPDATE: GAUTENG WATER SECURITY DASHBOARD

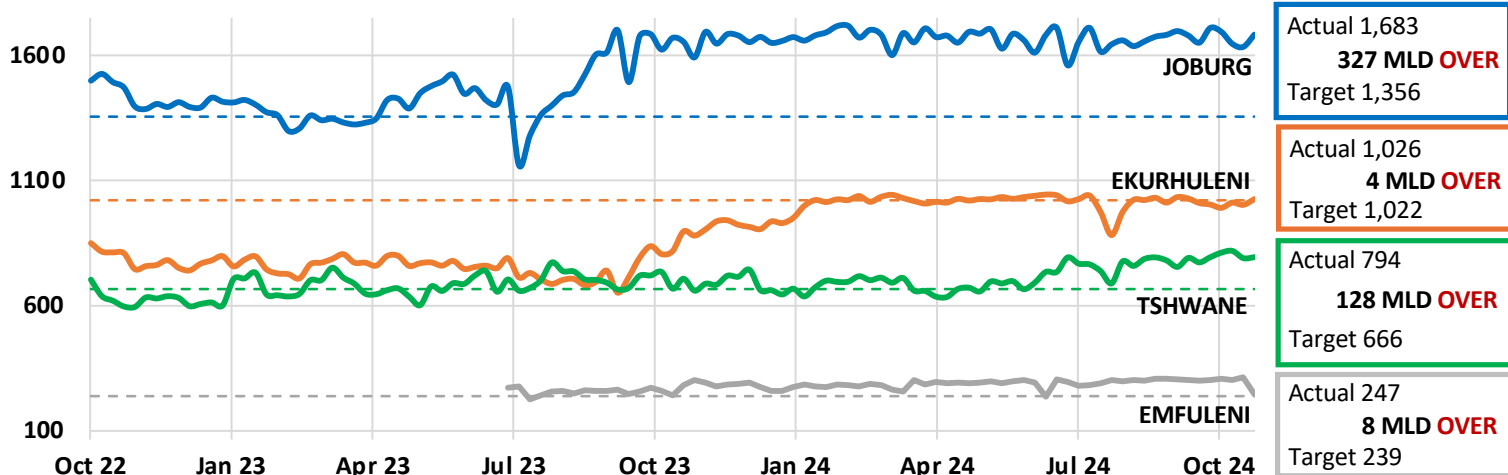
1 November 2024

1. METRO WATER CONSUMPTION	TOTAL	Joburg	Ekurhuleni	Tshwane	Emfuleni
This Week Average Daily Use (MLD)	3,750	1,683	1,026	794	247
Last Week Average Daily Use - corrected (MLD)	3,741	1,634	1,003	790	314
Water Use Efficiency Target Use (MLD)	3,283	1,356	1,022	666	239
DIFFERENCE BETWEEN TARGET AND ACTUAL (MLD)	467	327	4	128	8
% Deviation from target use	14%	24%	0%	19%	3%
Gross Per capita use (l/cd)	285	271	248	242	342
Increase/Decrease from previous week*	↑	↑	↑	↑	↓

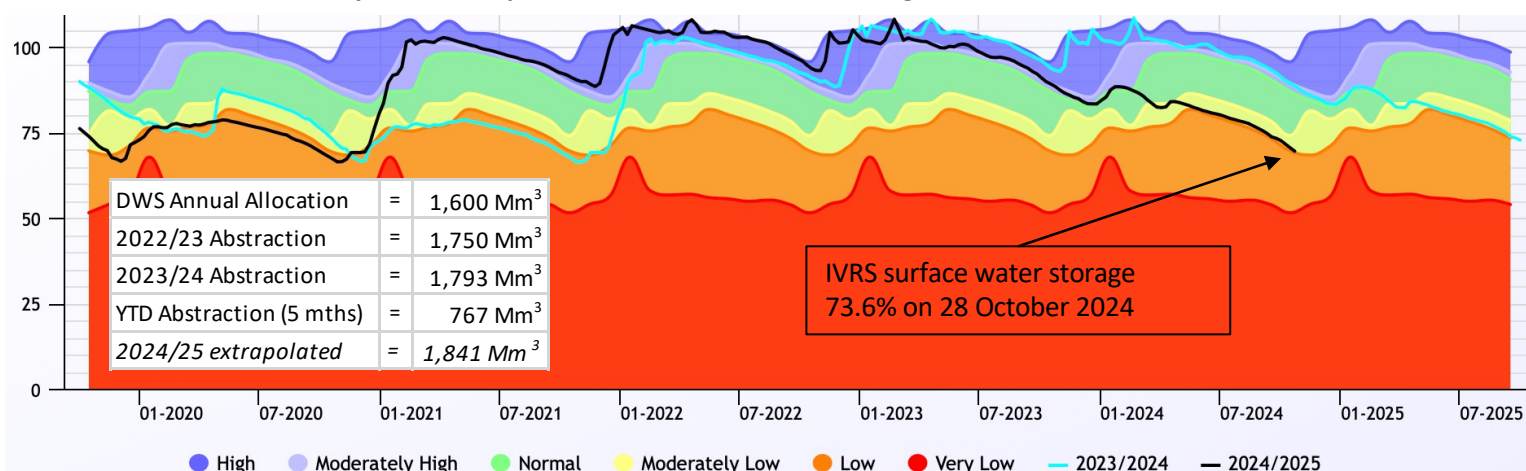
* ↓ Decrease from last week, but above target ↑ Increase from last week, but in target ↓ Decrease, within target ↑ Increase

- MLD = millions of litres per day, the common measurement of total water use for cities
- WUE = Water use efficiency targets is the target demand that matches the licence conditions of Rand Water. This is shown as target demand in dotted lines on the graph. The three metros & Emfuleni comprise ±90% of the WUE target
- Weekly demand figures are from Rand Water meter readings. System balancing and reconciliation due to meter inaccuracies sometimes result in corrections to previous weekly readings.
- Metro water use has increased slightly overall in the past week, with combined use now 14% above target. Emfuleni shows a sharp decrease in demand in the past week.

2. OVERALL WEEKLY CONSUMPTION / WATER USED FOR JOHANNESBURG, TSHWANE, EKURHULENI METROS & EMFULENI



3. IVRS SYSTEM STATUS – 5-year Vaal Major combined surface water storage



- The 5-year Vaal Major system storage is shown as indication that it is tracking lower than in the previous 3 years. DWS Restrictions are implemented on the IVRS when dam levels are below 60% at the beginning of the hydrological year starting in May of each year. Should over-abstraction continue, and rainfall be lower than normal, the DWS model is likely to indicate that restrictions be imposed in May 2025. Sources: <https://www.dws.gov.za/niwis2/SurfaceWaterStorage> and <https://www.dws.gov.za/Hydrology/Weekly/RiverSystems.aspx?river=IV>

- The weekly weather forecast shows hot weather across Gauteng with some rain forecast from next week. All water user are urged to use water sparingly, and refrain from using tap water to irrigate gardens, wash down hard-surfaces etc.